

The Protective Effect of anti-DFS70

Student: Gali Aljadeff

Mentor: Miri Blank

Systemic Lupus Erythematosus (SLE)

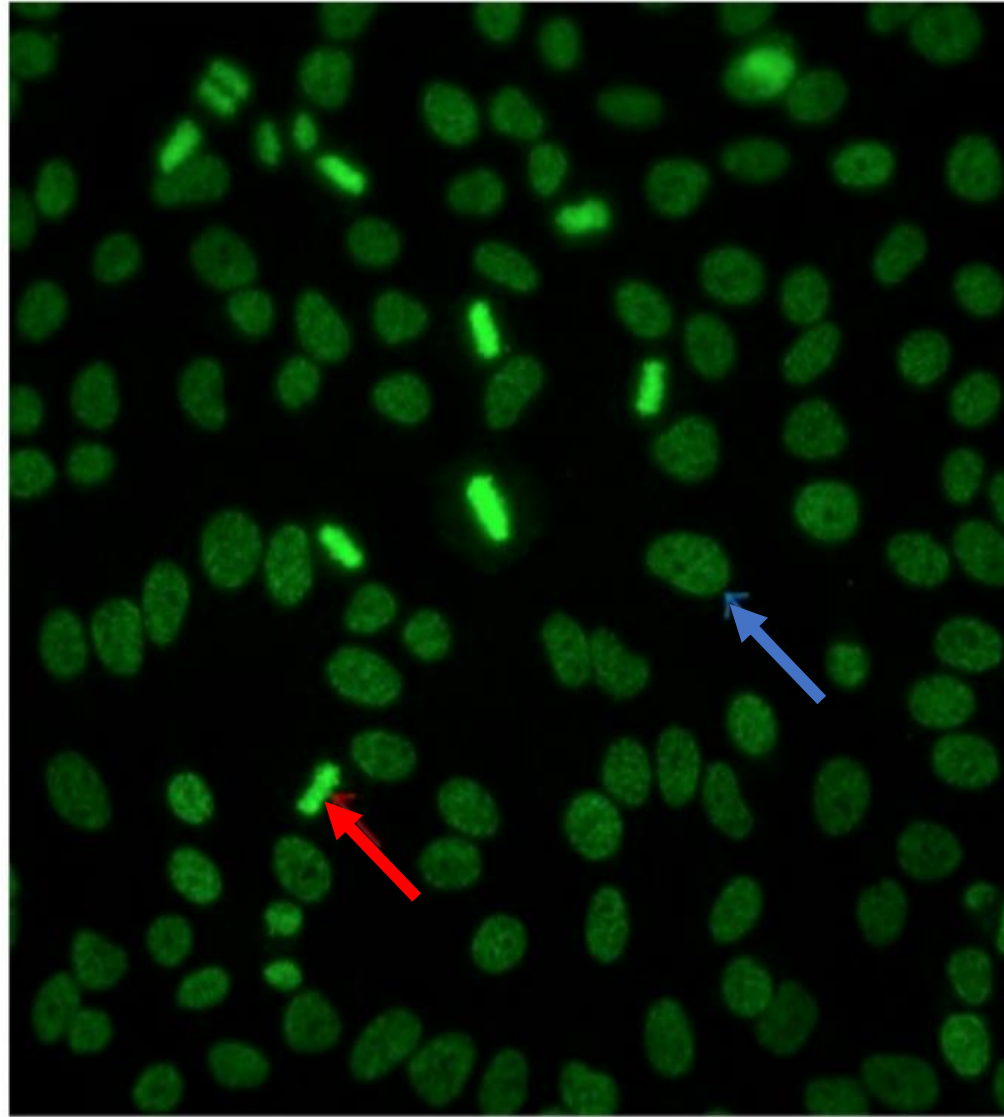
- Chronic autoimmune disease characterized by a broad spectrum of autoantibodies
- Clinical manifestations:
 - Skin (butterfly rash)
 - Joints (arthralgias)
 - **Kidneys (Lupus Nephritis)**
 - Neurological Symptoms



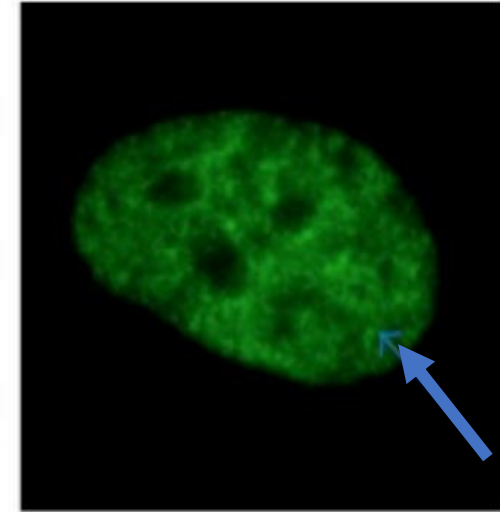
Is DFS70 protective?

- Dense Fine Speckled 70 antigen is a nuclear growth/transcription factor
- DFS70 antibody most commonly observed in individuals that do not have antinuclear antibodies (ANA) and in healthy individuals.

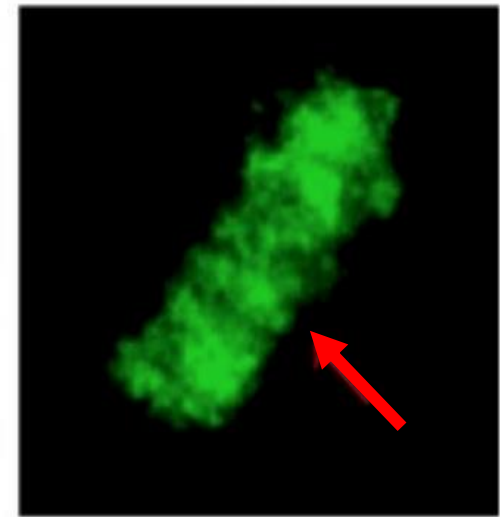
**Do DFS70 autoantibody
protect against
autoimmune rheumatic
diseases?**



(a)



(b)



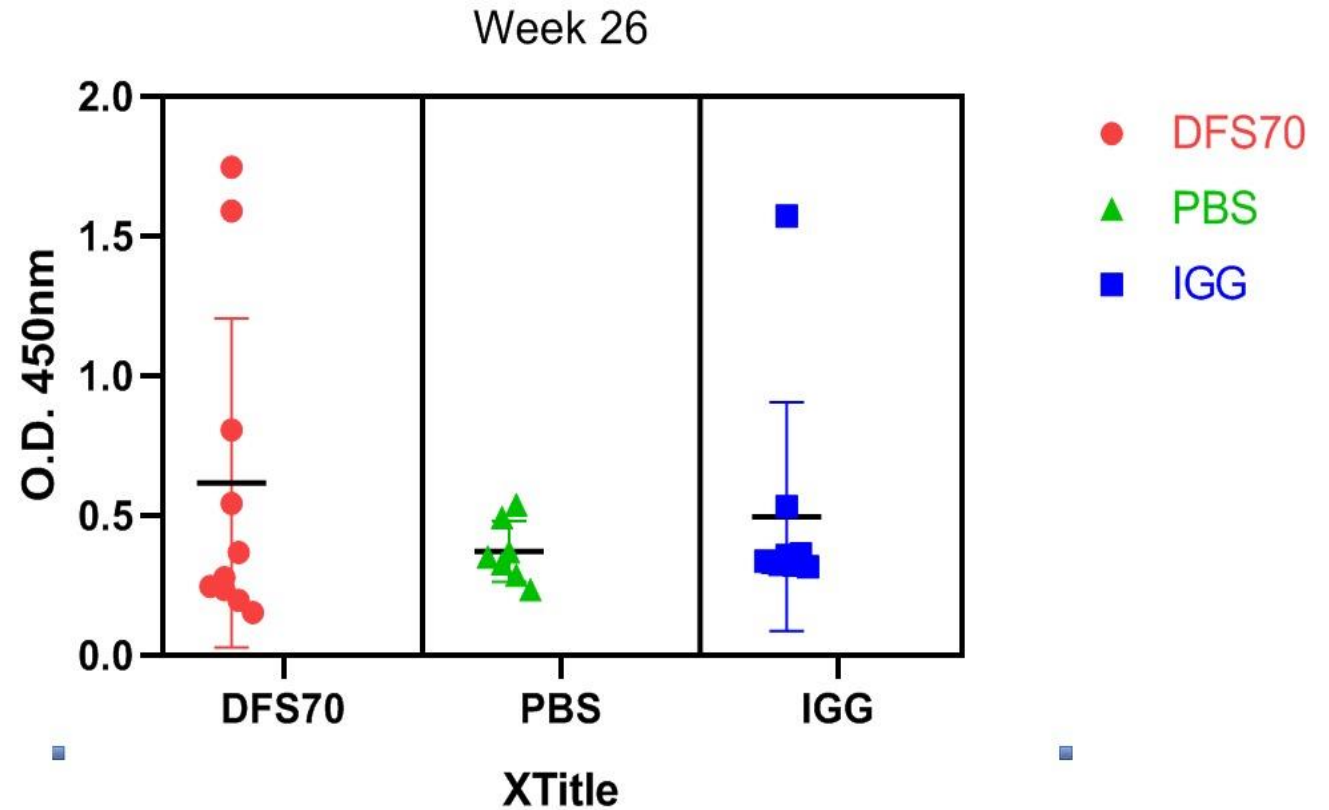
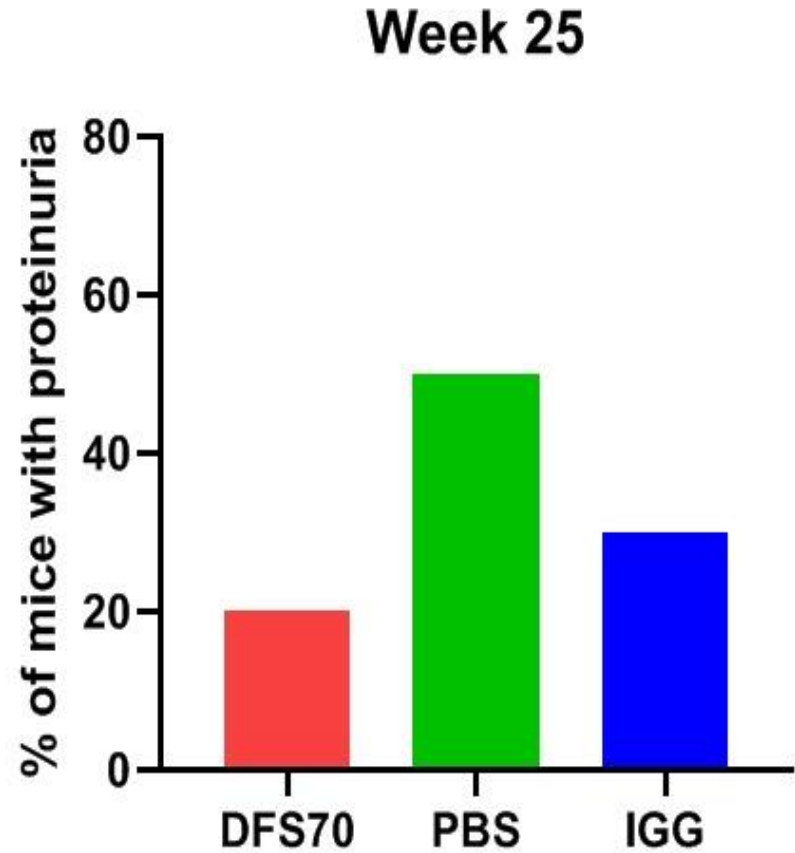
(c)

Methods



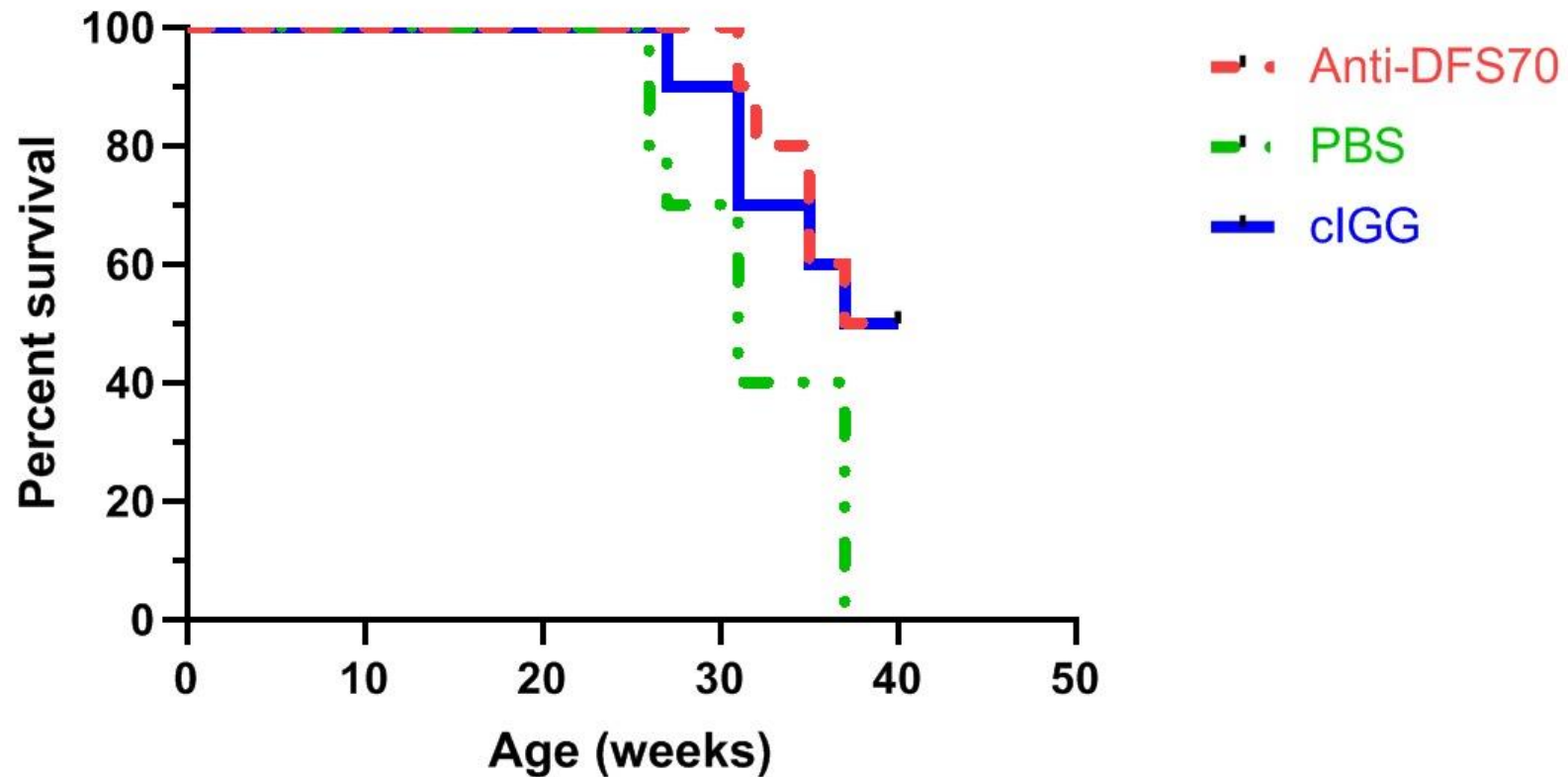
- 3 Subject Groups
 - Anti DFS-70 + PBS injection (n= 10)
 - IgG + PBS injection (n = 10)
 - PBS injection (n = 10)
- NZB X NZW/F1 (SLE) mice, prone to develop lupus on genetic background, were injected weekly from 14 weeks to 38 weeks old with antibodies
- Two variables were followed:
 - (1) Proteinuria
 - (2) Levels of anti DS-DNA antibodies

The Preventative Effect of anti-DFS70 on NZBXW/F1 mice (SLE)



P=0.54

The Preventative Effect of anti-DFS70 on NZBXW/F1 mice (SLE)



P=0.055