

# Automated Liver Lesions Classification Using Dictionary Bag Of Visual Words (BoVW) Model

Nicholas Keddell, Noa Rozendorn <sup>1</sup>, Eyal Klang <sup>1</sup>, Idit Diamant <sup>2</sup>,  
Hayit Greenspan <sup>2</sup>,  
Avi Ben Cohen <sup>2</sup>, Eli Konen <sup>1</sup>, Michal M Amitai <sup>1</sup>

Department of Diagnostic Imaging  
Sheba Medical Center Sackler Faculty of Medicine 1  
Department of Biomedical Engineering 2  
Tel Aviv University



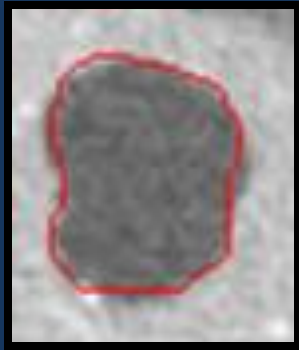
# background

- Classification of liver lesions is a common challenge in liver imaging
- Differentiation between benign and malignant tumors is a critical task

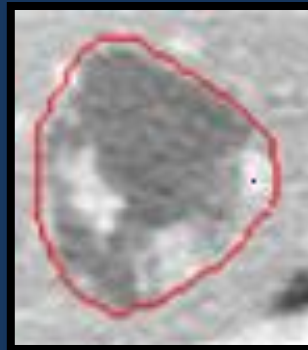
# Purpose

To Develop and evaluate an algorithm for the automatic classification of liver lesions using the Bag-Of-Visual-Words (BoVW) model

# Classification of Hypodense Liver Lesions in portal phase CT



Cysts



Hemangiomas



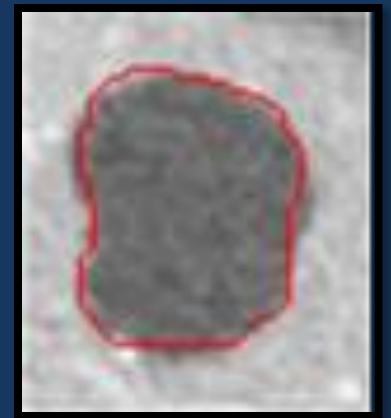
Metastases



# Hypodense Liver Lesions

- Cysts:

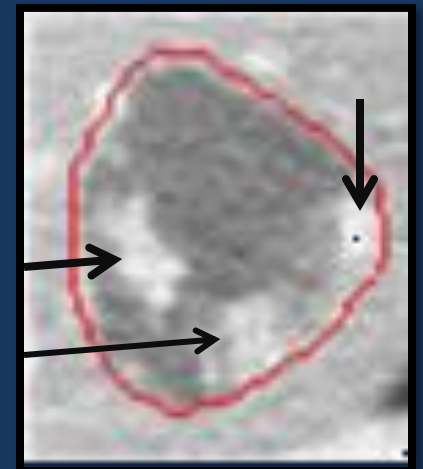
Non enhancing, homogenous lesions with sharp borders



# Hypodense Liver Lesions

- Hemangiomas:

Discontinuous nodular peripheral enhancement, with fill-in on delayed images



# Hypodense Liver Lesions

- Metastases:

Have soft-tissue attenuation,  
enhance with contrast material,  
and have less well-defined  
margins than cysts



# Bag Of Visual Words (BoVW) model

- An algorithm for automatic image classification by computer
- Based on referring to features of images as "words in a dictionary"



# Sentences about TV



- “Seinfeld is an American television sitcom that originally ran for nine seasons on NBC”
- “It may have started life as a hopeful spin-off from 'Cheers', but right from the very first episodes, 'Frasier' proved that it had enough style and substance of its own to become a TV legend”
- “The majority of *Oz*'s plot arcs are set in "Emerald City", named for a setting from *The Wizard of Oz*”

# Sentences about TV



- “**Seinfeld** is an American **television** sitcom that originally ran for nine **seasons** on **NBC**”
- “It may have started life as a hopeful **spin-off** from '**Cheers**', but right from the very first **episodes**, '**Frasier**' proved that it had enough style and substance of its own to become a TV legend”
- “The majority of **Oz's plot** arcs are set in "Emerald City", named for a **setting** from *The Wizard of Oz*”

# Dictionary - TV



**Seinfeld**  
*originally*  
*television*  
*Seasons*

**Spin off**  
**Episodes**  
**TV**  
**named**  
**OZ's plot**

# Sentences about Cooking



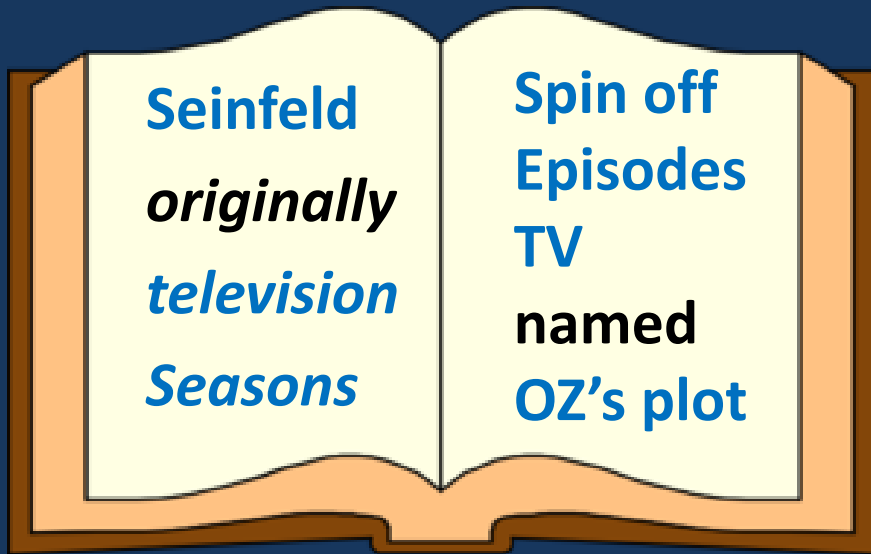
- “L'Atelier de Joël Robuchon is the name of eight French gourmet restaurants, located in Hong Kong, Las Vegas, London, Paris, Singapore, Taipei and Tokyo”
- “Sushi is a Japanese food consisting of cooked vinegared rice combined with other ingredients, seafood, vegetables and sometimes tropical fruits”
- “Commercial tom yum paste is made by crushing all the herb ingredients and stir frying in oil. Seasoning and other preservative ingredients are then added”

# Sentences about Cooking



- “L'Atelier de Joël Robuchon is the name of eight French **gourmet restaurants**, located in Hong Kong, Las Vegas, London, Paris, Singapore, Taipei and Tokyo”
- “Sushi is a Japanese **food** consisting of **cooked vinegared rice** combined with other ingredients, **seafood**, **vegetables** and sometimes **tropical fruits**”
- “Commercial **tom yum** paste is made by crushing all the **herb** ingredients and **stir frying** in **oil**. **Seasoning** and other **preservative ingredients** are then added”

# Dictionaries



TV



Cooking



# Classifying a new sentence

- “Pad Thai or phat Thai is a stir fried rice noodles dish commonly served as a street food and at casual local restaurants in Thailand”



# Classifying a new sentence

- “Pad Thai or phat Thai is a stir fried rice noodles dish commonly served as a street food and at casual local restaurants in Thailand”



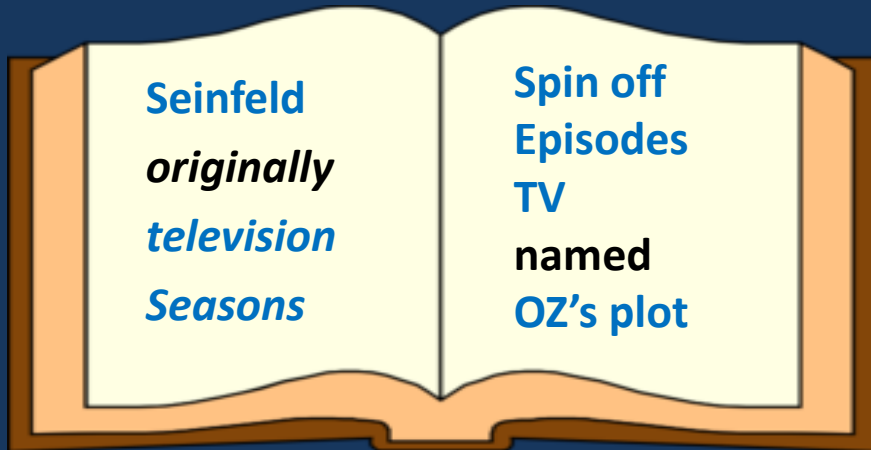
# Classifying a new sentence

noodles

stir fried rice

food

restaurants



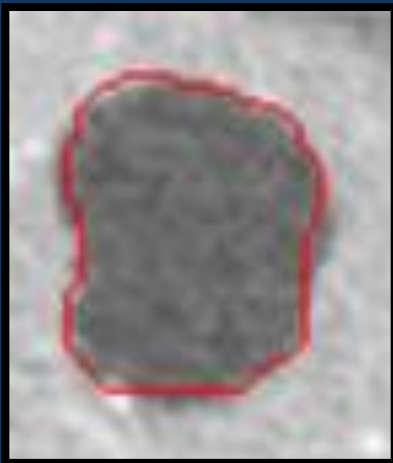
TV



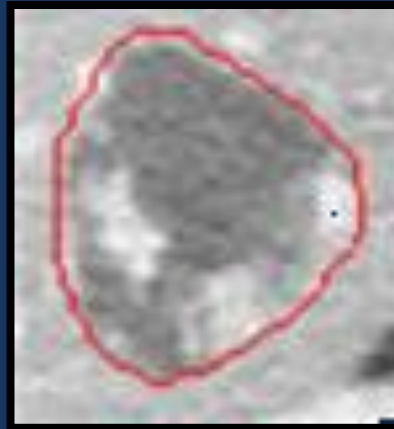
Cooking

# BoVW - Hypodense Liver Lesions

- Images are divided to small patches ("words"), and a "dictionary" is created.
- This "dictionary" is used to classify new lesions



Cyst



Hemangiomas



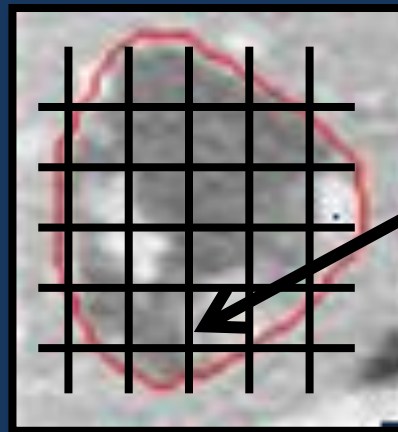
Metastases

# BoVW - Hypodense Liver Lesions

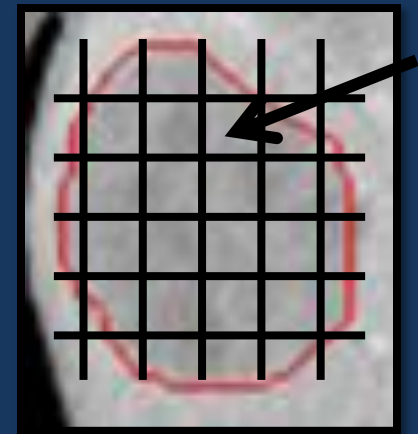
- Images are divided to small patches ("words"), and a "dictionary" is created.
- This "dictionary" is used to classify new lesions



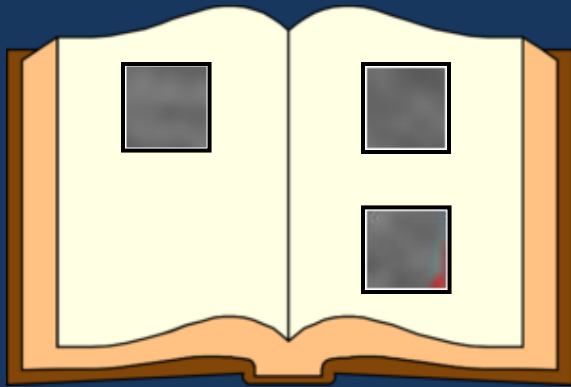
Cyst



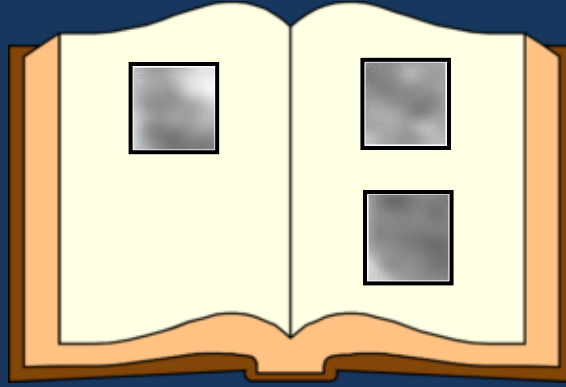
Hemangiomas



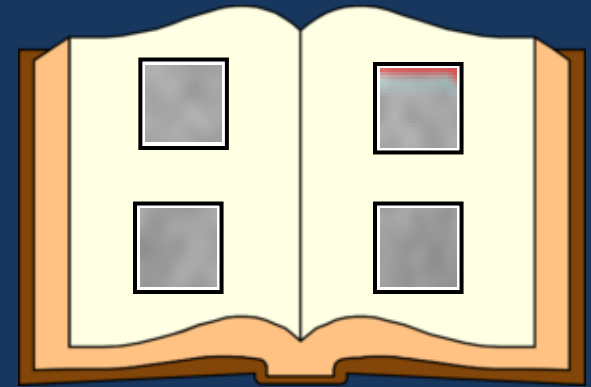
Metastases



**Cysts**



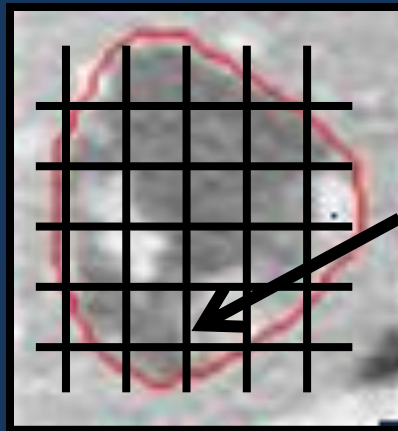
**Hemangiomas**



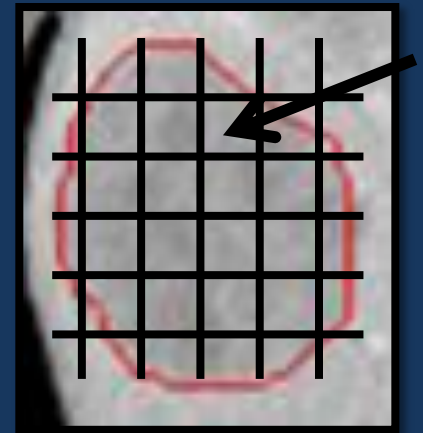
**Metastases**



**Cyst**



**Hemangiomas**



**Metastases**



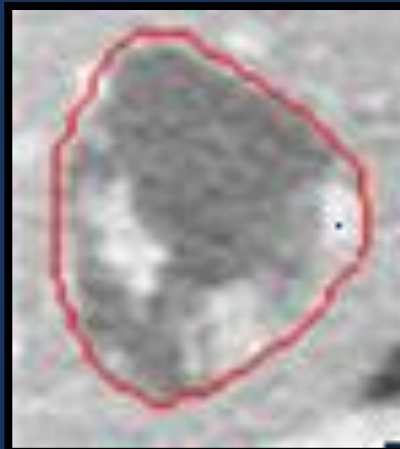
# Methods

- The first step study included portal-phase CT images of 85 liver lesions:
  - 22 cysts
  - 34 metastases
  - 29 hemangiomas
- Performed in our institution in the years 2011-2013

# Methods

- Marked the lesions margins
- Provided the diagnosis of each lesion which was established either by biopsy or clinical follow-up

# Methods



# Methods

- The sensitivity, specificity, NPV and PPV of the algorithm to identify cysts, metastases and hemangiomas were calculated

# Results

Algorithm\ True	Cysts	Metastases	Hemangiomas	Total
Cysts	20	1	1	22
Metastases	0	30	4	34
Hemangiomas	0	5	24	29

# Results

Algorithm\ True	Cysts	Metastases	Hemangiomas	Total
Cysts	20	1	1	22
Metastases	0	30	4	34
Hemangiomas	0	5	24	29



# Results

Algorithm\ True	Cysts	Metastases	Hemangiomas	Total
Cysts	20	1	1	22
Metastases	0	30	4	34
Hemangiomas	0	5	24	29

# Results

Algorithm\ True	Cysts	Metastases	Hemangiomas	Total
Cysts	20	1	1	22
Metastases	0	30	4	34
Hemangiomas	0	5	24	29

# Results

	Sensitivity	Specificity	PPV	NPV
<b>Cysts</b>	91%	100%	100%	97%
<b>Hemangiomas</b>	88%	88%	83%	92%
<b>Metastases</b>	83%	91%	83%	91%

# Results

	Sensitivity	Specificity	PPV	NPV
<b>Cysts</b>	91%	100%	100%	97%
<b>Hemangiomas</b>	88%	88%	83%	92%
<b>Metastases</b>	83%	91%	83%	91%

# Results

	Sensitivity	Specificity	PPV	NPV
<b>Cysts</b>	91%	100%	100%	97%
<b>Hemangiomas</b>	88%	88%	83%	92%
<b>Metastases</b>	83%	91%	83%	91%

# Conclusion

- Good preliminary results in characterizing three types of hypodense liver lesions
- This is the first part of a larger study aimed to differentiate several types of liver lesions



# Future research

- Analysis of different types of liver lesions:
  - HCC
  - FNH
  - Cholangiocarcinoma
- I. Using the BoVW algorithm
  - II. Triphasic Computed tomography studies

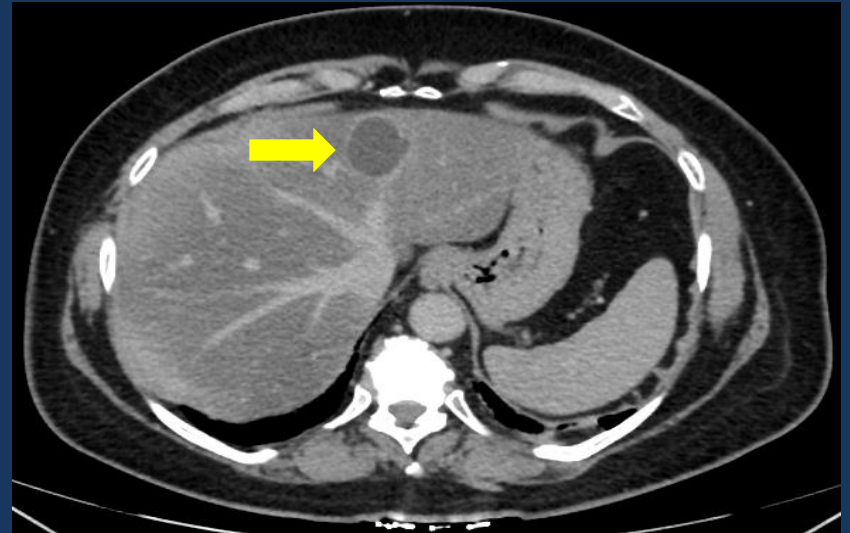
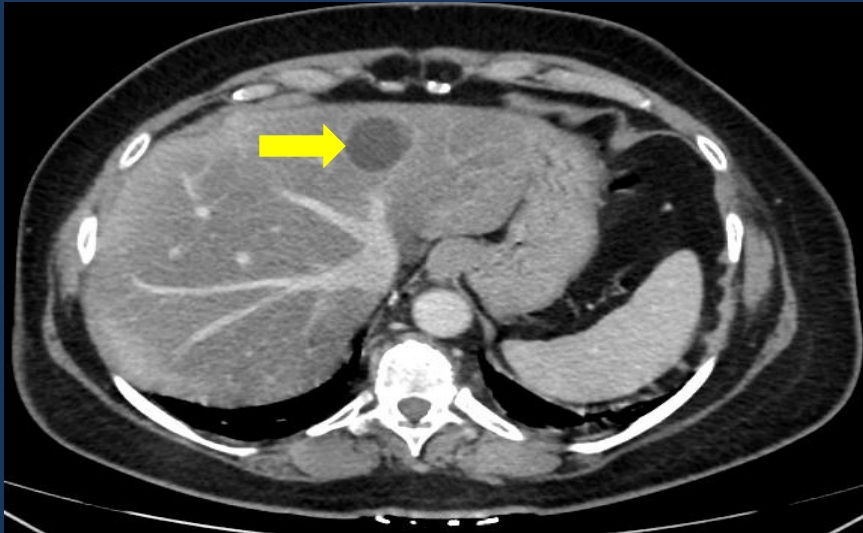
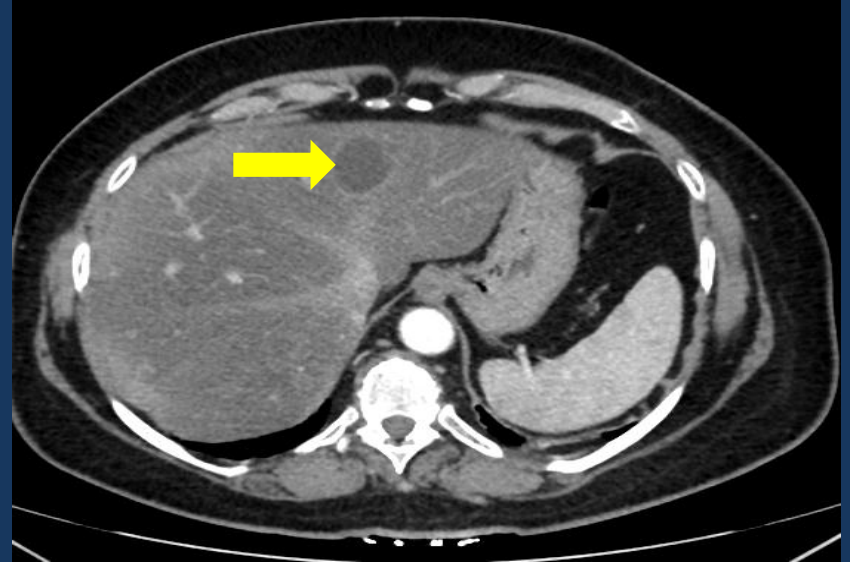
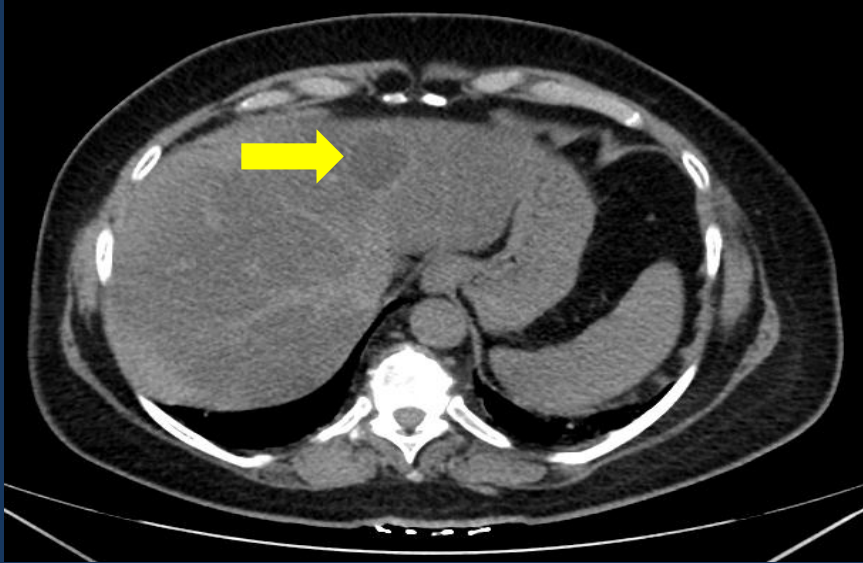
# Triphasic Computed tomography

- Intravenous contrast administered
- Images taken with scanning delay of;
- 0 seconds (non contrast)
- 25-35 seconds (arterial phase)
- 60-70 seconds (portal venous phase)
- 5-10 minutes (delayed phase)

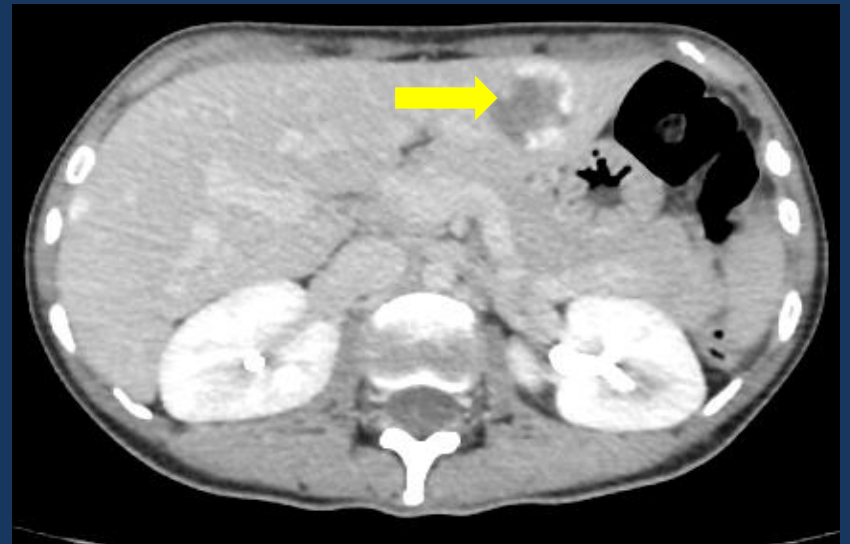
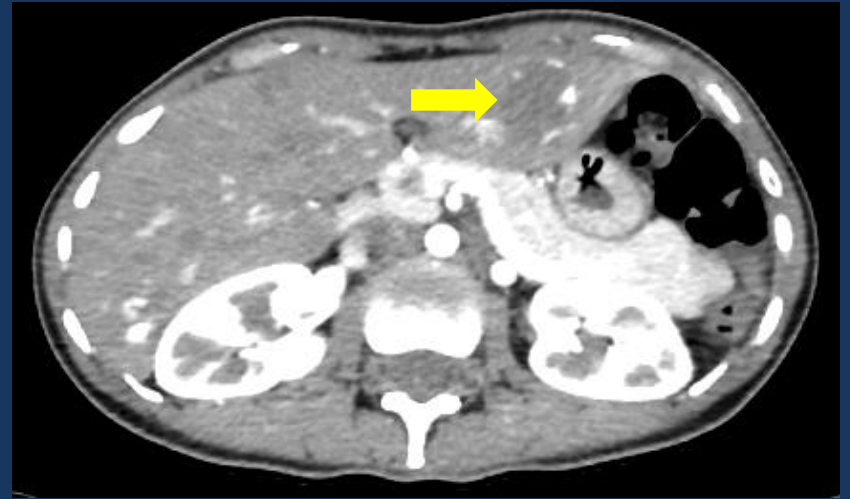
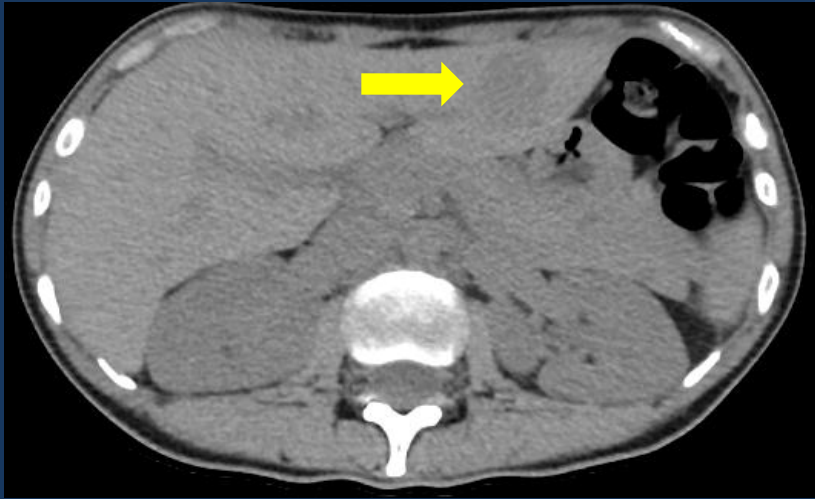
# Triphasic Computed tomography



# Cysts

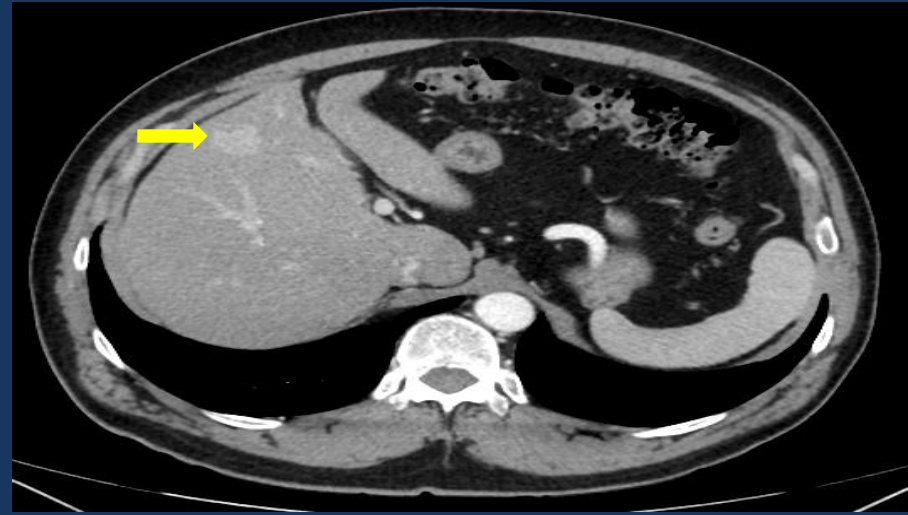


# Haemangioma





# Focal nodular hyperplasia (FNH)

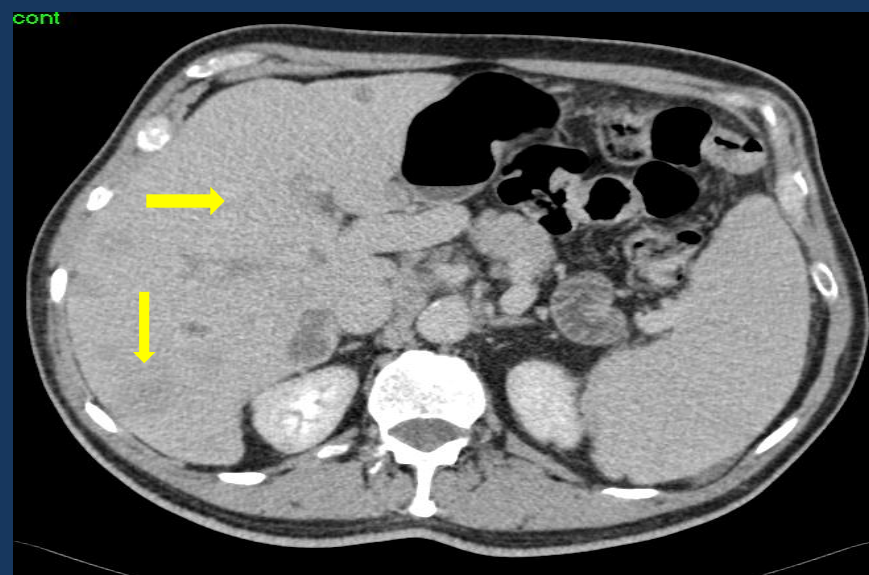
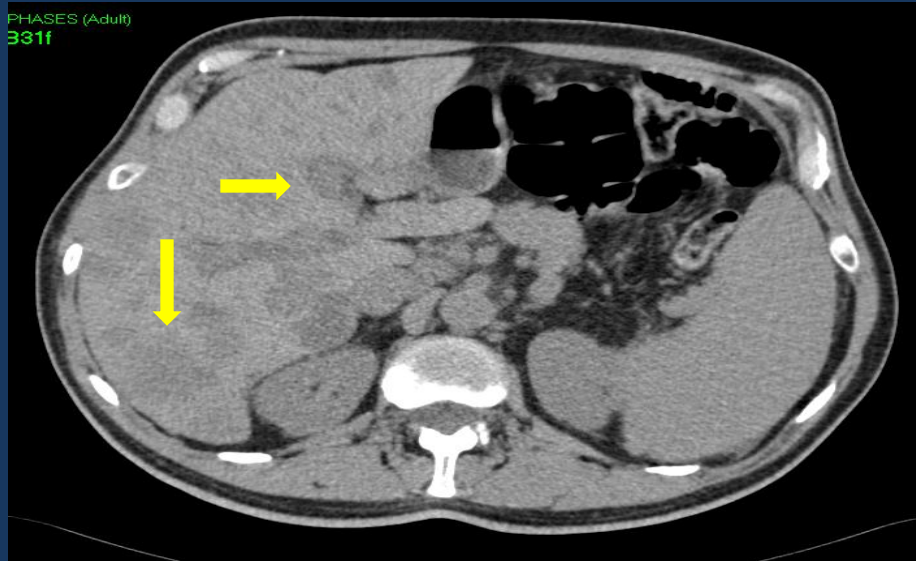


# Hepatocellular carcinoma



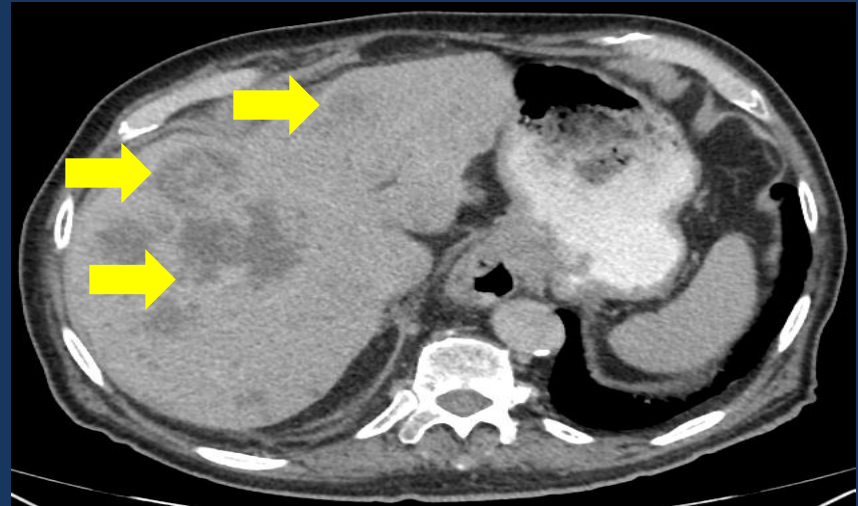
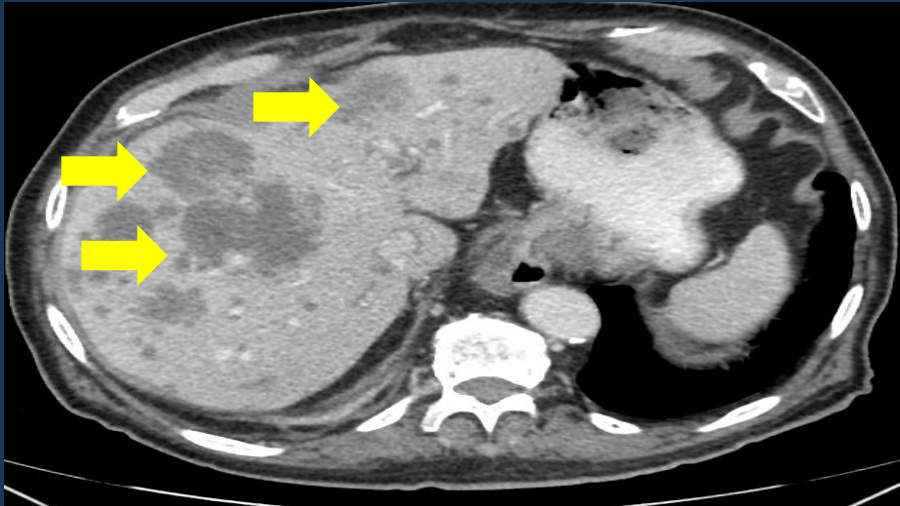
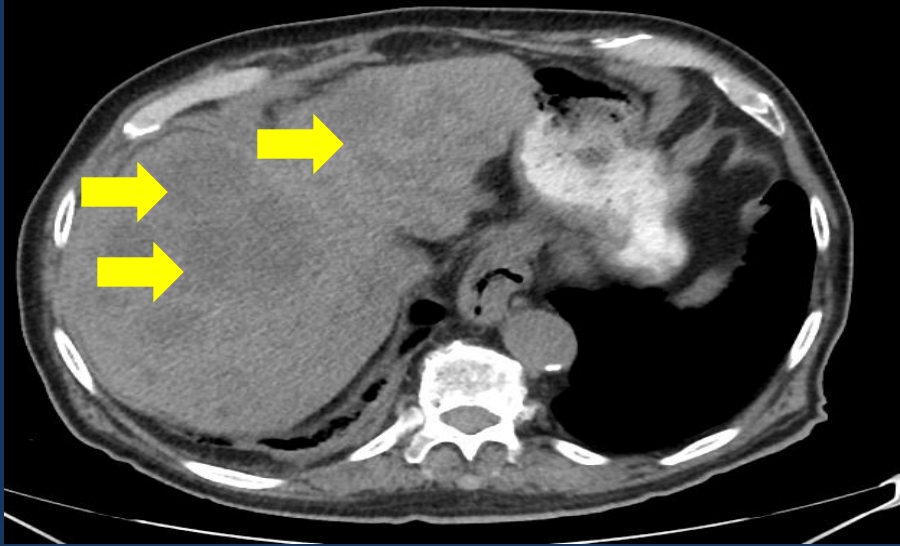


# Metastasis- Neuroendocrine





# Metastasis- Colorectal



# Working assumption

- Initial research concentrated on common, well defined lesions.
- The classification of ambiguous lesions is more complicated.
- The added data from the different stages of triphasic examinations will improve the classification accuracy of the algorithm

**Thank You**