

# **Efficacy of alemtuzumab treatment in active relapsing remitting multiple sclerosis : A study of real world evidence**

---

Mentor: Dr. Ofir Zmira  
Student: Alex Halpern

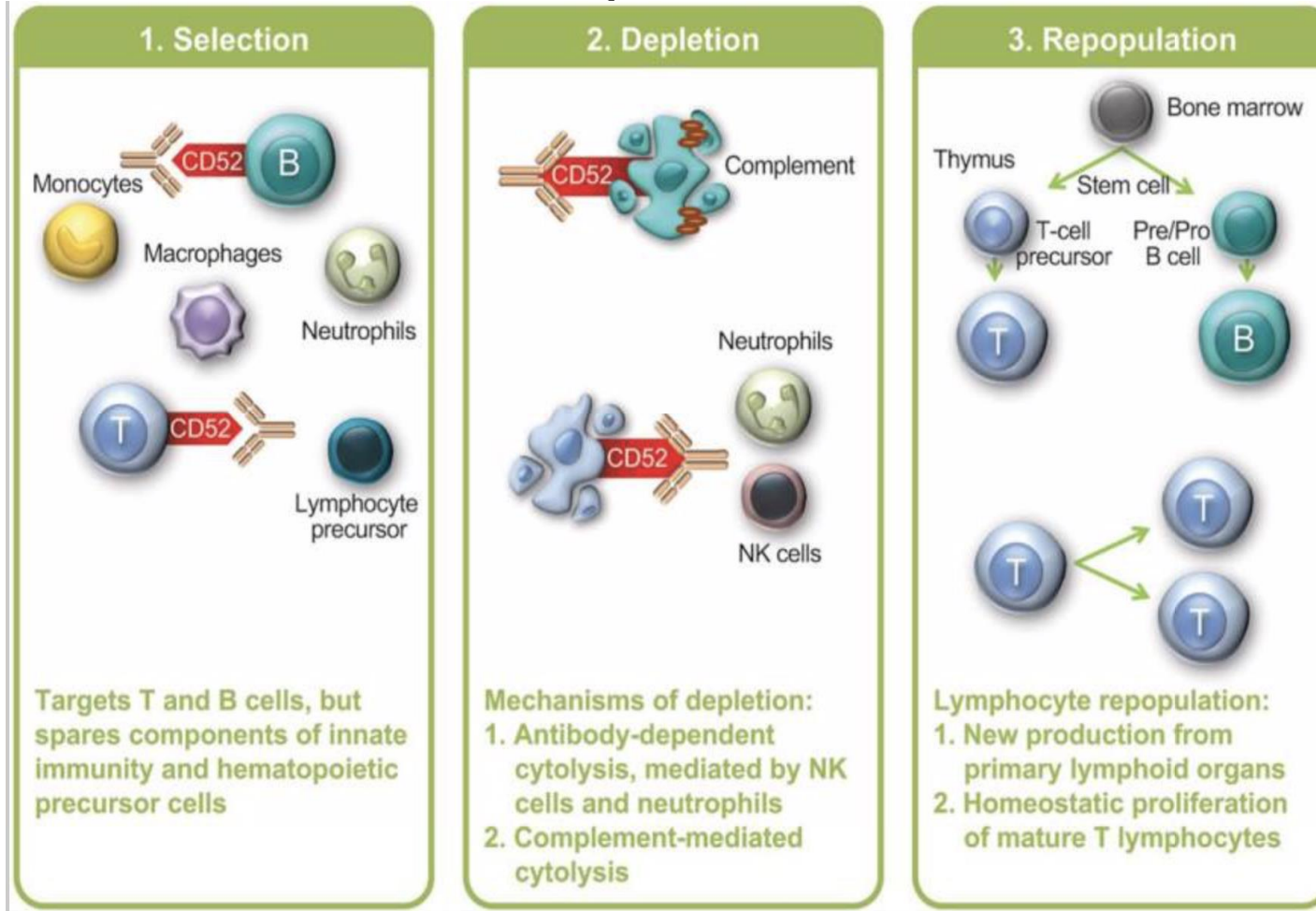
# Multiple Sclerosis

## CLINICAL PRESENTATION:



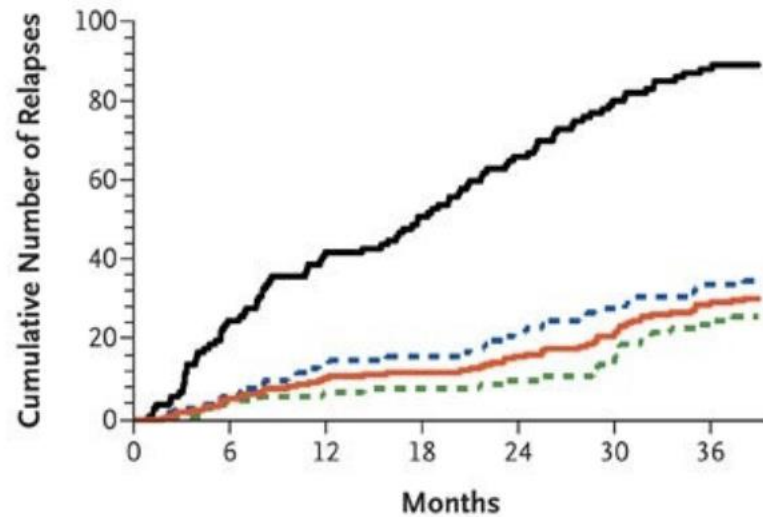
# Alemtuzumab

## ► Monoclonal Anti CD-52 antibody



# Previous Studies

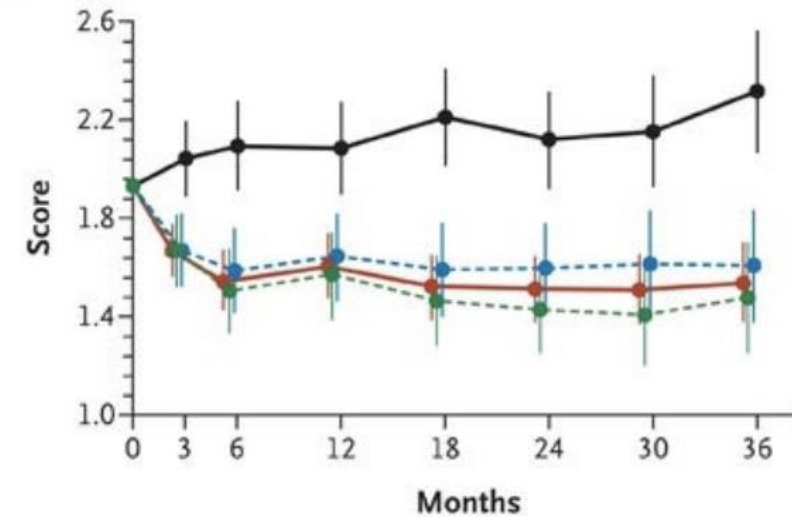
**B Relapse**



**No. at Risk**

Interferon beta-1a	111	99	94	82	75	71	66
Alemtuzumab, 12 mg/day	112	107	104	101	100	96	93
Alemtuzumab, 24 mg/day	110	108	105	105	102	100	96

**C EDSS Score**



**No. at Risk**

Interferon beta-1a	111	100	91	83	73	71	68
Alemtuzumab, 12 mg/day	112	107	103	99	99	92	88
Alemtuzumab, 24 mg/day	110	108	105	105	101	97	89

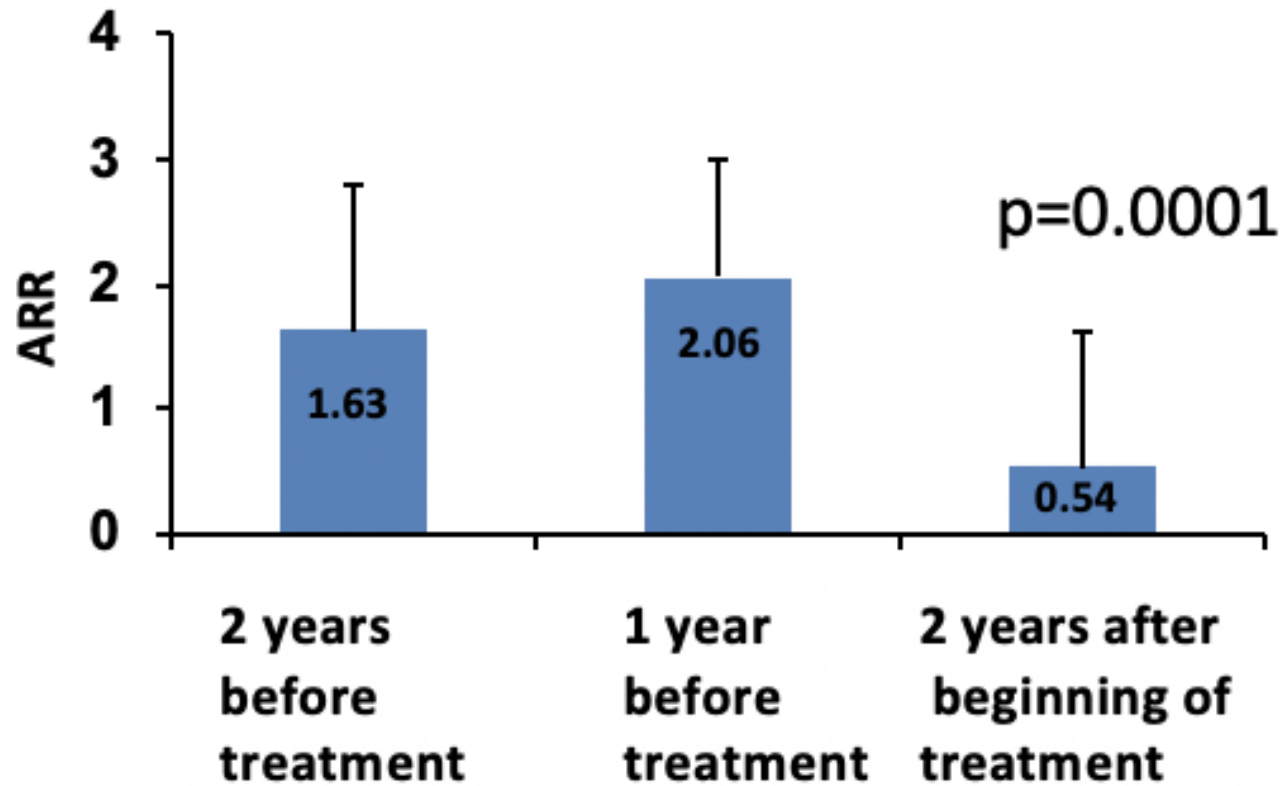
# Study Design

- ▶ Prospective cohort of 35 ARRMS patients
- ▶ **Variables followed:**
- ▶ 1. EDSS
- ▶ 2. Relapse rate
- ▶ 3. Number and volume of MRI lesions



# Results

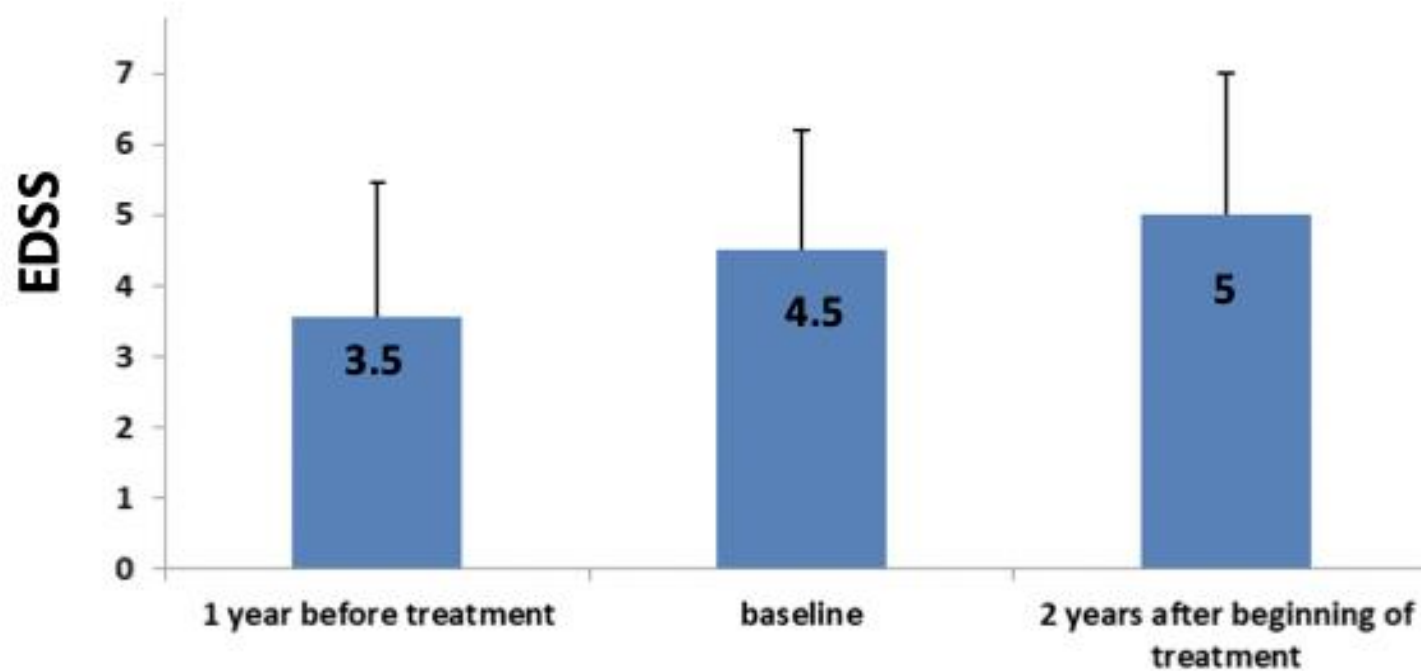
Mean annualized relapse rate before and after initiation of alemtuzumab treatment



# Results

**Neurological disability by the EDSS score 2 years before and after initiation of alemtuzumab treatment**

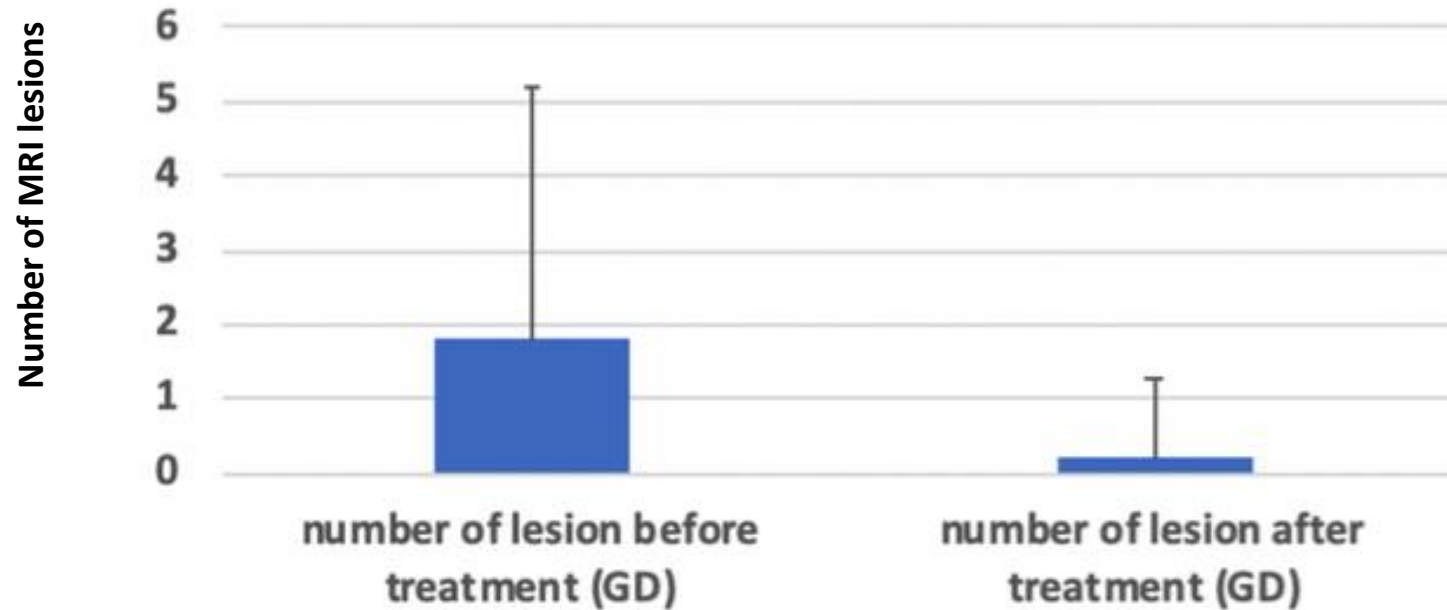
$P=.6177$





# Results

## Number of MRI lesions (Gadolinium)





The background features abstract, overlapping geometric shapes in various shades of blue, ranging from light sky blue to deep navy blue. These shapes are primarily located on the right side of the slide, creating a modern, dynamic feel.

► **Questions?**